

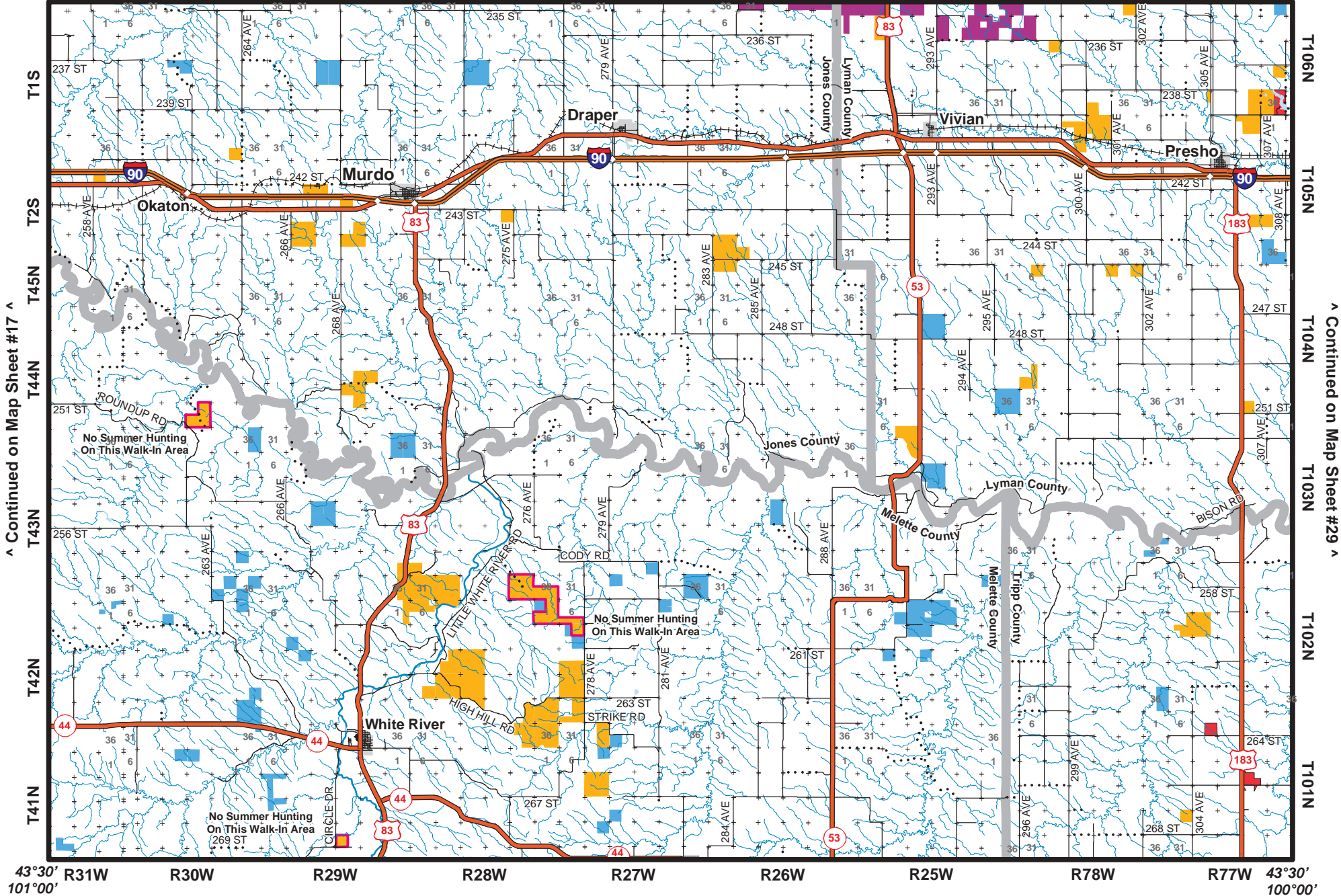
# Map Sheet 23

These maps include data from other sources. Most of the federal lands depicted in this guide are not posted with boundary signs or fences. Federal lands may have been sold or errors may exist. For these reasons map users should consult with the appropriate federal agency for current ownership information.

Scale 1:325,000  
1 inch represents 5.13 miles

These maps are to be used only as a guide. Signs will mark the actual boundary of the Walk In Area, Game Production Areas and Waterfowl Production Areas. Some Walk In Areas may have some additional restrictions. See the index in the back of the guide for details.

44°00' 101°00' R26E R27E R28E R29E R30E R31E R79W R78W R77W 44°00' 100°00'



Continued on Map Sheet #17

Continued on Map Sheet #29

43°30' 101°00' R31W R30W R29W R28W R27W R26W R25W R78W R77W 43°30' 100°00'